



ST PAUL'S COLLEGE

NEWSLETTER

FROM THE PRINCIPAL

Dear College Community

Thank you

Last Thursday the College celebrated the women in our community through the Community Breakfast. Four staff participated in a panel discussion facilitated by Chaplain Robbie Wenke, on the theme 'Walking with Purpose'. It was wonderful to be able to hear their reflections on what drives them in their professional and personal lives. We are blessed to have such strong role models not only in these women, but right across our staff.

Thank you to the team of people who made the event happen: Joanne Knobel, Amanda Stroh, Robbie Wenke, Dining Room and Maintenance staff, the P&F, student volunteers, and ultimately, to the community for their support of the event.

Leadership

Congratulations to the students who demonstrated courage and integrity through the leadership application and selection process for both Junior and Senior House Captain positions. I look forward to working with the successful candidates and am encouraged by the depth of talent we have to draw from. At St Paul's, while we recognise people in specific leadership roles, we encourage all students to see leadership as an act of service, whether or not we have a title.

Rite Journey

The Rite Journey program provides a fantastic opportunity for students to explore our college values while focusing on their transition from childhood to adulthood. Last week's calling and departure ceremony signaled the start of this journey, involving students, parents, teachers, and an experience at significant local sites such as Morgan's Lookout. I look forward to following the journey of our students throughout the year.

Exeat

We wish all our students a safe and restful exeat weekend. A reminder that there is no school for all students on the exeat day. Our staff will be undertaking training in the use of our Learning Management System - Scoop, ready for its Semester Two roll out with students.

Anita Morton

stpaulscollege.nsw.edu.au

Ph: 0260292200

admin@stpaulscollege.nsw.edu.au

ISSUE 2, 2024

8TH MARCH

- P.1 - Anita's message
- P.2 - International Women's Day Breakfast
- P.3 - Headspace
- P.4 - Students of the Week
- P.5 - From the Director, Teaching & Learning
- P.6 - Chaplain Chatter; Aust. Maths Competition
- P.7 - Yrs 9/10 Outdoor Education
- P.8 - Ag Happenings
- P.9 - RJ Calling & Depature Ceremony
- P.10 - Community Gardens
- P. 11 - Info Page
- P.12 - Community notice



Integrity



Compassion



Courage



Service



Creativity

International Women's Day Community Breakfast


Last Thursday we hosted a community breakfast to celebrate International Women's Day. We were privileged to hear from four inspiring staff members who shared their heart on walking with purpose.

Thank you to all the women and men who came along and the wonderful helpers who made our morning special. We also enjoyed our Meet and Greet morning for new families who toured our College.



Headspace

Students at St Paul's actively reflect our College Value of Compassion. They demonstrate care for their friends but can sometimes need guidance in understanding how best to help someone going through a tough time. The following information from **headspace** is a good starting point for conversation with your child. Further supports are available through the College Wellbeing Team.

 the facts:
getting help

 **headspace**
National Youth Mental Health Foundation

helping a friend going through a tough time

**When a friend
is going through
a tough time,
it can be hard
to know what to
do or say.**

You might have noticed they:

- don't seem like themselves, or
- they're acting differently.

You might:

- let them know that you care
- ask them what you can do to support them
- let them know that you're there to help them.

They might not open up at first, but showing them you have their back can give your friend strength and hope. This also lets them know you're someone they can talk to if they do decide to open up later on.

Asking your friend if they need help can be hard, especially when you don't know what kind of help you can offer. Checking in can make a big difference to the person having a tough time.



What if my friend doesn't want any help?

For many people, reaching out for support can be really difficult. Some of your friends might need time and space.

Be patient with your friend. Don't judge them or get frustrated if they don't take you up on your offer of support. Remind them that you're there if they need you and give them time.

Sometimes you might need to involve someone else – like a trusted adult. If you do decide to tell someone, try to let your friend know that you're planning on doing this first and encourage them to get involved in the conversation.



Integrity



Compassion



Courage



Service



Creativity

Students of the Week

Kavel Students of the Week:

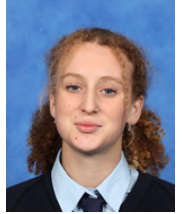
Archie Butler: Archie has settled into Year 11 extremely well. In mathematics, he has begun developing effective study routines of completing all set tasks, in class and extension activities. He has also been using Microsoft Teams to view the weekly outlines to practice skills before the lesson. He always has a great attitude in class and enjoys contributing to class discussions.

Elli Lowry: Elli has shown exceptional leadership and diligence this Term. Her commitment to excellence is evident in class. She actively engages in class discussions and group activities. Her exemplary work ethic and leadership in Kavel House qualities make her a standout student.

Leidig Students of the Week:

Isabel Mannes: Isabel has been nominated by her teachers for showing a positive attitude towards her Year 11 studies. She has started the year with a strong work ethic, diligently working hard in classes and contributing to classroom discussions. Isabel has a friendly & polite disposition and always works well with her peers. Congratulations Isabel!

Clair Hay: Clair has been nominated for being a positive role model around the college. Clair is a natural leader who always demonstrates wisdom and empathy towards others. Clair is diligent with her senior studies and displays excellent respect to both staff and students. Well done Clair!



Round 2 Enrolment
opportunities close
Wednesday 20th March

**SCHOLARSHIPS
NOW OPEN**



ST PAUL'S
COLLEGE

www.stpaulscollege.nsw.edu.au

Academic scholarships are open for current St Paul's students and new students entering into Years 7, 9, 10 and 11 in 2025. Please refer to our criteria and application process found on our website.



Integrity



Compassion



Courage



Service



Creativity

From the Director, Teaching & Learning



Disability Provisions for HSC Examinations 2024

The NSW Education Standards Authority (NESA) offers special consideration for the examinations of students who are experiencing significant disadvantage because of conditions that impair their ability to perform in the examination setting. In order to access this consideration, students must undertake an application process. Students who think that they might be eligible are encouraged to speak to Mrs Sarah Cunningham or to me.

Formal Assessment Tasks - Years 7-12

We are at that part of the term when assessment tasks are falling due. The assessment tasks due for the next fortnight, for all years, are detailed in the table below.

ASSESSMENT TASKS DUE - ALL YEARS						
Term 1, 2024	Year 7	Year 8	Year 9	Year 10	Year 11	Year 12
Week 7	NAPLAN Christian Studies	-	NAPLAN PASS	PASS	Standard Maths Business Studies	Ancient History Business Studies
Week 8	-	Mathematics	-	English Maths 5.1 Science	SLR Biology English Advanced PDHPE English Standard	English Advanced English Standard Chemistry CAFS

NAPLAN 2023 - Year 7 and Year 9

The National Assessment Program - Literacy and Numeracy (NAPLAN) is a point in time assessment of literacy and numeracy skills that are essential for every child to progress through school and life. The scheduled tests begin Wednesday 13th March and conclude Wednesday 20th March, with catch-up tests taking place at the end of Week 8.

If you have any further questions about NAPLAN, please contact me.

Years 10-12 Assessment Tasks

Across all courses in Years 10, 11 and 12, students have received assessment schedules that provide an overview of the assessment tasks in that subject for the year. If a student in Years 10-12 is unable to submit or sit an assessment task because of illness or mishap, there is a firm set of protocols to be followed; this is outlined in assessment policy booklets that have been distributed to all students in Years 10-12.

In the first instance, parents and caregivers are to contact the Director, Teaching and Learning, Mr Nash Clark when it is identified that a student will miss an assessment task.

Years 7-9 Assessment Tasks

If a student in Years 7-9 is unable to submit or sit an assessment task, they should speak to their classroom teacher in order to alter arrangements.

Mr Nash Clark



Integrity



Compassion



Courage



Service



Creativity

Chaplain Chatter

They are like trees planted along the riverbank, bearing fruit each season without fail. Their leaves never wither, and in all they do, they prosper. Psalm 1:3-4 NLT



After an amazing start to our warmer season, we have been blessed to only see the effects of the dry and dusty paddocks starting to form in recent weeks. While the quadrangle at the College is well kept and green, we acknowledge that this is a season of little growth and where sometimes plants struggle, wither and dry out. Growing up on a farm you quickly realise that pastures such as Lucerne are a great alternative – when everything becomes dry and dusty, you will see a Lucerne paddock looking fresh and green. Why is that? What is different about this plant to others? Their roots! Unlike many grasses/pastures, Lucerne in the right soil can grow as far as 10 –20ft deep (there have been records of much deeper surpassing depths of well over 30ft (9 metres) allowing it reach moisture well beyond surface levels helping it flourish through the hardest of conditions.

Our students here at St Paul's have had such a wonderful start to the year surrounded by "good pastures" under the guidance of some incredible "farmers". There's nothing better than seeing a flourishing paddock of young people that continue to grow and produce positive results in every area – no matter the season.

Prayer: We are grateful Lord that through our dryest season you provide and help us grow. We are thankful that we are like the trees planted along your riverbank where we draw our strength from daily. We ask you to bless those who are finding this season hard and pray your peace be with them. We also pray for those fighting fires, helping and supporting their communities and for those who have been affected. We also celebrate those who are flourishing and encourage all to grow deeper with you. Amen

Mr Robbie Wenke, College Chaplain

Australian Mathematics Competition - 2024



St Paul's students from Years 7 to 12 can be involved in the Australian Mathematics Competition. This competition allows students to challenge themselves to solve unique mathematical problems, with the goal to demonstrate the importance and relevance of mathematics in students' everyday lives. Students will be required to use higher order thinking and problem-solving skills in Mathematics to test their knowledge against students of the same age from all over Australia. For those who sign-up for this challenge, the competition will be held in early Term 3, during the school day.

The Math Department strongly encourage you to discuss this opportunity with your child and suggest that they have a go at the AMC. The competition is suitable for all students wishing to extend themselves academically and take up the personal challenge of competing in a national competition. The nature of the questions does not mean that a student must be in an advanced class or even think they are good at Maths, it tests their ability to problem solve and think through problems there is no need for prior study or revision.

AMC will be an online competition, allowing greater accessibility for students and faster delivery of results. The competition will cost of \$8.50 per student. We are required to register students online. Thus, the closing date for SPC students to enter will be Wednesday 19 June.

If you would like your child to participate in this Mathematics competition, please register using the following link [AMC Entry Form](#) 2024. You will receive a notification, via Parent Lounge, after the closing date for you to pay your son/daughter's registration cost.

Mr Peter O'Neill



Integrity



Compassion



Courage



Service



Creativity

Year 9/10 Outdoor Education Elective

Students are off to a great start with our new Outdoor Education elective course. Term 1 is focusing on Experiencing the Outdoors as an introduction.

Key areas include reasons for and benefits of participating in Outdoor Education, our bucket list activities, teamwork, initiative and communication skills and rock climbing and in upcoming weeks hiking. We are looking forward to many adventures this year and opportunities to share our learning with the school community.



Equine ambassadors on International Women's Day



Integrity



Compassion



Courage



Service



Creativity



Agriculture Happenings



Plenty has continued to happen on the farm with students being involved in caring for the day old Isa Brown pullets, fencing, pregnancy scanning the commercial ewes, feeding the animals, sheep husbandry tasks, garden bed preparations, trial plots and more recently setting up our new Te Pari sheep handler.

Several students have been achieving many great accomplishments outside of the classroom as well.

Daniel Knobel (10) participated in a shearing school and was recognised by the tutors for his diligence and skill. Daniel has been selected to attend an extension school. We look forward to seeing Daniel put his skills into action in Week 10 and 11 when we shear the stud sheep ready for the Holbrook Sheep and Wool Fair.

Layla Bahr (10) placed 4th at the Great Southern Supreme Merino Show and will be travelling to the Royal Easter Show in Sydney in March to compete in the state final for Fleece judging. This is Layla's second year in a row where she has qualified for the state final in Sydney.

Grace Routley (10) will also be travelling to Sydney to represent the college in the Interschool Auctioneering demonstration after she was awarded Novice Champion in the region.

We would also like to thank the many families and businesses that help to support our agriculture program here at SPC. This week, we would especially like to thank Mr Andrew Kotzur who donated his time and machinery to help unload our new sheep handler and feed livestock.

We look forward to the many activities that will continue to happen over the next few weeks through to the end of term, including pasture establishment, preparing sheep for the Holbrook Sheep and Wool Fair, the arrival of the new Merino Wethers for the Merino Wether Challenge, shearing, joining of the stud ewes, more fencing, preparation for sowing and the reestablishment of the chicken coop.



Integrity



Compassion



Courage



Service



Creativity

Rite Journey Calling and Departure Ceremony

On Wednesday, Year 9 students participated in The Rite Journey program's Calling and Departure Ceremony. They began by ringing the old school bell, received their polo shirts, and concluded the service at Morgan's Lookout. During this time, they dropped a gum leaf with notes on letting go of childhood and embracing their future. This year, they will reflect, challenge, and grow on their journey from childhood to adulthood.

The Rite Journey incorporates the subjects of Christian Studies, Personal Development, Health and Physical Education.



Integrity



Compassion



Courage



Service



Creativity

Abundant Autumn Harvest in the Community Gardens

A big Thankyou to Mr Lieschke and Bede Turner's (Year 8) Grandpa for donating three hand-made garden beds to our Community Gardens. We appreciate the time and effort that went into making them and look forward to using them to grow our herbs, flowers and vegetables.

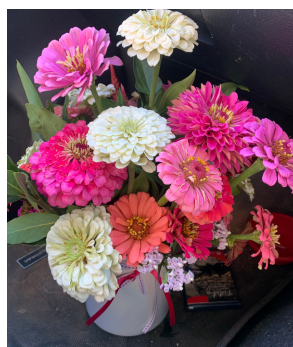
Students have harvested kilos of potatoes this week to take home. Students worked collaboratively to dig, sort and pack them. It is always exciting to find potatoes that have been carefully planted in October.

We have an amazing selection of flowers from our flower farm. We had the privilege to help provide flowers for the International Women's Day event, for our local church, and many bunches have been taken home to families. Students learnt to grow these flowers from seed.

Our little tomatoes have bountiful, providing students with many little containers of tomatoes to take home, we also share our tomatoes with our wider community, dropping them on the doorsteps of our elderly and families to enjoy.

Thank you to the students for all their hard work and for learning to give without receiving anything in return.

Cheryl Paech, Community Garden Supervisor





**The Uniform Shop is open:
Tuesday from 10.30am-2pm
Friday from 12.30pm-4pm**

(Any changes to these days and times will be communicated here).



This year's one-off order of soft cell jackets will close on 14th March. Cost is \$90 and there are a couple of sizes to try on in the shop. Please contact me for further information. felicity.klemke@stpaulscollege.nsw.edu

**Felicity Klemke
Uniform Shop Manager**



Returning to the Boarding Houses after Exeat

A reminder to our boarding families that boarders can return to the boarding houses from 7am Monday morning.

As per the Boarding Handbook, following an exeat or long weekend the boarding houses will open from 7am the next school day.



2024	Term Dates	Exeat Weekends
Term 1	Ends Friday 12/4	Friday 8/3
Term 2	Starts Monday 29/4 Ends Friday 28/6	Friday 7/6
Term 3	Starts Monday 22/7 Ends Friday 27/9	Monday 26/8
Term 4	Starts Tuesday 15/10 Ends Friday 6/12	Friday 8/11



A Not-for-Profit Charity based in Jindera, NSW

Office Administration Assistant

Our volunteer organisation seeks an applicant with sound office, administration and organisational skills. This person needs to be proficient with IT, have experience with Microsoft Office Suite, Publishing, Social Media and Marketing.

Part-time. 16 hours per week.

For more information, please email leeny60@hotmail.com

or ring Leeny Mason (President) 0419605566

Submit resumes before March 10th, 2024